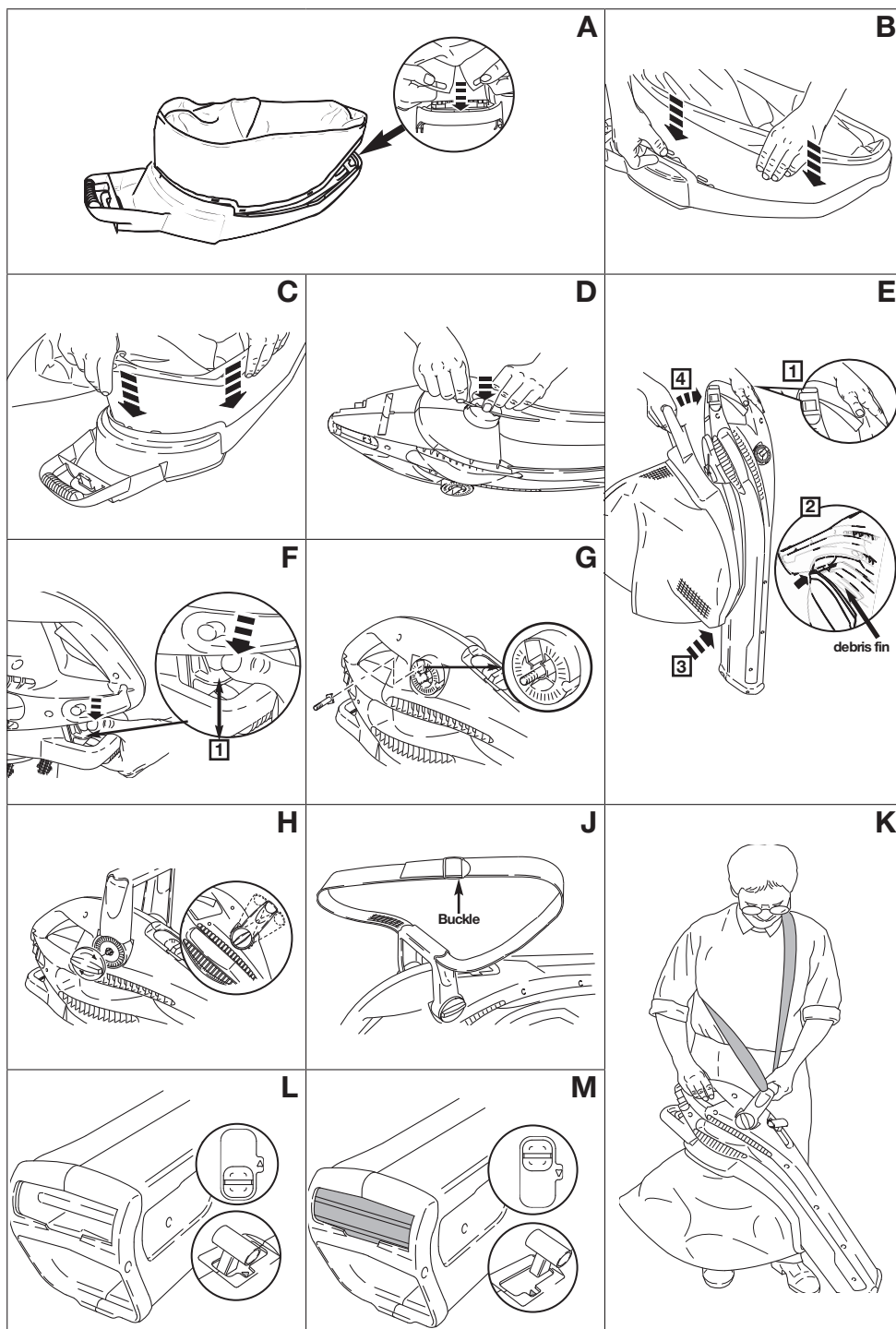
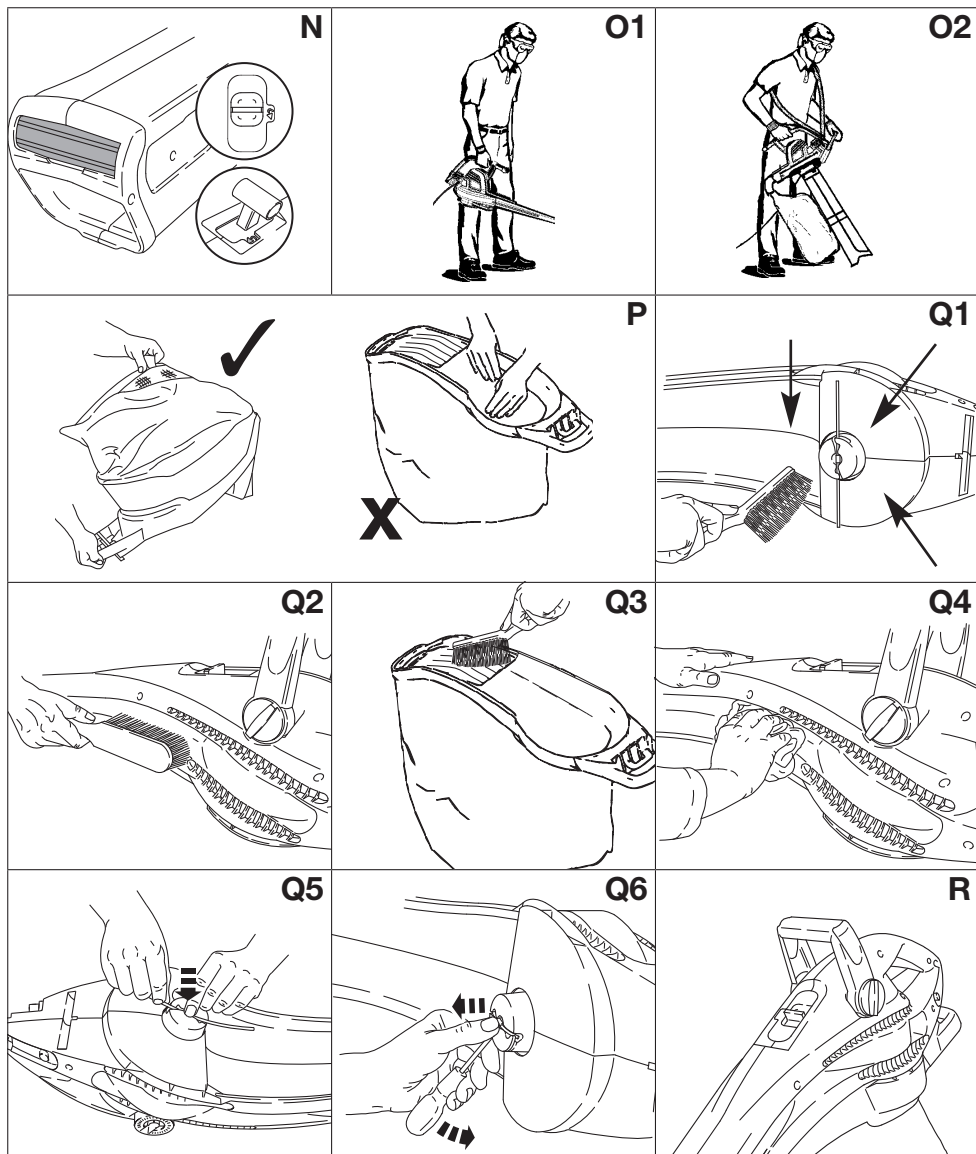


GardenVac

Art. 9672726-01

EN Operator's manual
Electric Blower/Vacuum





FLYMO Electric Blower/Vacuum GardenVac

1. SAFETY	4
2. ASSEMBLY	6
3. OPERATION	7
4. MAINTENANCE	8
5. STORAGE	8
6. TROUBLESHOOTING	9
7. TECHNICAL DATA	9
8. ACCESSORIES	10
9. SERVICE/WARRANTY	10

Original instructions.



This product may be used under supervision, or if instruction regarding the safe use of the product has been provided and the resulting dangers have been understood, by children aged 8 and above, as well as by persons with physical, sensory or mental disabilities or a lack of experience

and knowledge. Children must not be allowed to play with the product. Cleaning and user maintenance must not be performed by children without supervision. The use of this product by young people under the age of 16 is not recommended.

Intended use:

Blower mode: The FLYMO Blower is intended to blow dirt particles or grass cuttings away from paths, driveways, courtyards, etc., to blow grass cuttings, straw or leaves to create piles, or to remove dirt particles from corners, joints or gaps between tiles or bricks.

Vacuum mode: The FLYMO Vacuum is intended to vacuum dry material such as leaves, grass, small twigs, and bits of paper.

The product is not intended for long term use.



DANGER! Risk of explosion!

Do not use the product in enclosed rooms or to vacuum flour, sand, wood dust, etc.

1. SAFETY

IMPORTANT!

Read the operator's manual carefully before use and keep for future reference.

Symbols on the product:



Read operator's manual.



Keep bystanders away.



Always wear approved hearing protection.
Always wear approved eye protection.



Do not expose to rain.



Remove plug from the mains immediately if the cable is damaged or cut.



Switch off:
Remove plug from mains before cleaning or maintenance.



Wait until the rotor blades have stopped moving after switching off.



Do not use when wearing open hair, loose jewellery or loose-fitting clothes.

Before you use the product for the first time:



Assemble the debris bag to the bag frame.

Every time you use the product:



Switch off and disconnect from the mains before you fit the cutting line to the cutting head, clip into place and before you remove the cutting line.



Switch off and disconnect from the mains before you fit the fully assembled debris bag to the product and before you remove the fully assembled debris bag.

General safety warnings

Electrical safety



DANGER! Electric shock!

Risk of injury due to electric shock.

→ **The product must be supplied through a residual current device (RCD) having a rated residual operating current not exceeding 30 mA.**



DANGER! Risk of injury!

Cut injury when the rotor blades turn or the product starts accidentally.

→ **Disconnect the product from the mains and wait for the rotor blades to stop before you maintain or replace parts. Thereby the disconnected socket must be in the visual range.**

Cables

If extension cables are used, these must comply with the minimum cross-sections in the table below:

Voltage	Cable length	Cross section
220 – 240 V / 50 Hz	Up to 20 m	1.5 mm ²
220 – 240 V / 50 Hz	20 – 50 m	2.5 mm ²

1. Mains cables and extensions are available from your local Approved Service Centre.
2. Only use extension cables specifically designed for outdoor use and which conform to one of the following specifications:
Ordinary rubber (60245 IEC 53), Ordinary PVC (60227 IEC 53) or Ordinary PCP (60245 IEC 57).
3. If the short connection lead is damaged, it must be replaced by the manufacturer, its service agent or similarly qualified persons in order to avoid a hazard.

Safe operating practices

1 Training

- a) Read the instructions carefully. Be familiar with the controls and the correct use of the machine.
- b) Never allow children or people unfamiliar with these instructions to use the machine. Local regulations can restrict the age of the operator.
- c) Keep in mind, that the operator or user is responsible for accidents or hazards occurring to other people or their property.

2 Preparation

- a) Obtain ear protection and safety glasses. Wear them at all times while operating the machine.
- b) While operating the machine always wear substantial footwear and long trousers. Do not operate the machine when barefoot or wearing open sandals. Avoid wearing clothing that is loose fitting or that has hanging cords or ties.
- c) Do not wear loose clothing or jewellery that can be drawn into the air inlet. Keep long hair away from the air inlets.
- d) Operate the machine in a recommended position and only on a firm, level surface.
- e) Do not operate the machine on a paved or gravel surface where ejected material could cause injury.

f) Before using, always visually inspect to see, that the shredding means, shredding means bolts and other fasteners are secure, the housing is undamaged and that guards and screens are in place. Replace worn or damaged components in sets to preserve balance. Replace damaged or unreadable labels.

g) Before use, check the supply and extension cord for signs of damage or aging. If the cord becomes damaged during use, disconnect the cord from the supply immediately.
DO NOT TOUCH THE CORD BEFORE DISCONNECTING THE SUPPLY. Do not use the machine if the cord is damaged or worn.

h) Never operate the machine while people, especially children, or pets are nearby.

3 Operation

- a) Before starting the machine, make certain that the feeding chamber is empty.
- b) Keep your face and body away from the feed intake opening.
- c) Do not allow hands or any other part of the body or clothing inside the feeding chamber, discharge chute, or near any moving part.
- d) Keep proper balance and footing at all times. Do not overreach. Never stand at a higher level than the base of the machine when feeding material into it.
- e) Always stand clear of the discharge zone when operating this machine.
- f) When feeding material into the machine be extremely careful that pieces of metal, rocks, bottles, cans or other foreign objects are not included.
- g) If the cutting mechanism strikes any foreign objects or if the machine should start making any unusual noise or vibration, immediately shut off the power source and allow the machine to stop. Disconnect the machine from the supply and take the following steps before restarting and operating the machine:
 - inspect for damage;
 - replace or repair any damaged parts;
 - check for and tighten any loose parts.
- h) Do not allow processed material to build up in the discharge zone; this may prevent proper discharge and can result in kickback of material through the intake opening.
- i) If the machine becomes clogged, shut-off the power source and disconnect the machine from supply before cleaning debris.
- j) Never operate the machine with defective guards or shields, or without safety devices, for example debris collector in place.
- k) Keep the power source clean of debris and other accumulations to prevent damage to the power source or possible fire.
- l) Do not transport this machine while the power source is running.
- m) Stop the machine, and remove plug from the socket. Make sure that all moving parts have come to a complete stop
 - whenever you leave the machine,
 - before clearing blockages or unclogging chute,

– before checking, cleaning or working on the machine.

- n) Do not tilt the machine while the power source is running.

4 Maintenance and storage

- a) When the machine is stopped for servicing, inspection, or storage, or to change an accessory, shut off the power source, disconnect the machine from the supply and make sure that all moving parts are come to a complete stop. Allow the machine to cool before making any inspections, adjustments, etc. Maintain the machine with care and keep it clean.
- b) Store the machine in a dry place out of the reach of children.
- c) Always allow the machine to cool before storing.
- d) When servicing the shredding means be aware that, even though the power source is switched off due to the interlock feature of the guard, the shredding means can still be moved.
- e) Replace worn or damaged parts for safety. Use only genuine replacement parts and accessories.
- f) Never attempt to override the interlocked feature of the guard.

5 Additional safety instructions for units with bagging attachments

Switch-off the machine before attaching or removing the bag.

Additional safety warnings

Electrical safety



DANGER! Cardiac arrest!

This product makes an electromagnetic field while it operates. This field may under some conditions interfere with active or passive medical implants. To decrease the risk of conditions that can possibly injure or kill, we recommend persons with medical implants to speak with their physician and the medical implant manufacturer before you operate the product.

Before use, examine the cable for signs of damage or ageing. If the cable is found to be defective, take the product to an authorised Service Centre and have the cable replaced.

Do not use the product if the electric cables are damaged or worn.

Immediately disconnect from the mains if the cable is cut, or the insulation is damaged. Do not touch the electric cable until the cable has been disconnected. Do not repair a cut or damaged cable. Replace it with a new one.

The extension cable must be uncoiled. Coiled cables can overheat and reduce the efficiency of your mower. Keep the extension cable away from product, always work away from the power point.

Do not pull cable around sharp objects.

Always switch off at the mains before disconnecting any plug, cable connector or extension cable.

Stop the engine, disconnect the mains and examine the cable for damage or ageing before you wind the cable for storage.

Do not repair a damaged cable, replace it with a new one. Use only genuine replacement cable.

Always wind the cable carefully, avoid kinking.

Do not carry the product by the cable.

Do not pull on the cable to disconnect any of the plugs.

Use only on AC mains supply voltage shown on the product rating label.

Our products are double insulated to EN 60335. Do not connect an earth to any part of the product.

Check the working area for hidden cables.

Do not use for pond care or close to water.

Only use a weather proof extension cable fitted with a coupler according to IEC 60320-2-3.

Personal safety



DANGER! Risk of suffocation!

Small parts can be easily swallowed. There is also a risk that the polybag can suffocate toddlers. Keep toddlers away when you assemble the product.

Do not use in explosive atmosphere.

Never operate the product when you are tired, ill or under the influence of alcohol, drugs or medicine.

Do not overload the product.

Use gloves, wear slip resistant shoes and wear eye protection.

Do not use under wet conditions.

Do not disassemble the product further than the delivery status.

Operate the appliance only in daylight or in good artificial light.

Walk, never run.

Keep all nuts, bolts and screws tight to be sure the appliance is in safe working condition.

Avoid using the machine in bad weather conditions especially when there is a risk of lightning.

Check the debris collector frequently for wear or deterioration.

2. ASSEMBLY



DANGER! Risk of injury!

Cut injury when the rotor blades turn or the product starts accidentally.

- Disconnect the product from the mains and wait for the rotor blades to stop before you assemble the product.



DANGER! Cut injury!

- Assemble the product completely before you use the product in blower or vacuum mode.

To fit the cutting line [Fig. D]:



DANGER! Risk of injury!

Sharp edges can cause injury.

- Handle the cutting line with care.

Only use the cutting line for the GardenVac:
Reference no.: FLY024 Part no.: 513859390

- Place the cutting line into the slot in the cutting head and click into place. Make sure that the cutting line is correctly located.

To assemble the debris bag [Fig. A/B/C]:

1. Put the bag frame on the ground.
2. Fit the first two holes on the plastic trim of the debris bag to the first two location points on the front of the bag frame (where debris fin is attached) [Fig. A].
3. Fit the next hole on the plastic trim to next location point on bag frame [Fig. B].
4. Repeat until all holes on the plastic trim of the debris bag are securely located to bag frame [Fig. C].
Make sure that the debris bag is fitted securely to the bag frame.

Attaching the debris bag:

To attach the debris bag [Fig. E]:

IMPORTANT: Do not squeeze the trigger when you fit the debris bag [Fig. E1].

1. Make sure that the debris fin is horizontal [Fig. E2].
2. Locate the bag frame into the clip on the underside of the product [Fig. E3].
3. Lift the handle towards the product until the bag latch locates and click into place [Fig. E4].

To remove the debris bag [Fig. F]:

1. Gently press the bag latch down [Fig. F1].
2. Lower the handle of the bag frame away from the product.
3. Move the bag frame forward.

To assemble the additional handle [Fig. G/H]:

The additional handle can be assembled to your required position.

1. Place the additional handle bolt into the location slot on the product and slide into place [Fig. G].
2. Repeat on the other side.
3. Locate the additional handle onto the handle bolts on each side of the product in the required position.
4. Turn the handle knobs clockwise [Fig. H].
Make sure that the additional handle is secured.

To assemble the shoulder harness [Fig. J/K]:

1. Thread the strap through the slots in the handle [Fig. J].
2. Thread the strap through the buckle [Fig. J].
3. Adjust the shoulder harness as required to ensure it is in the most comfortable position and the collection tube is positioned slightly above the debris [Fig. K].

3. OPERATION



DANGER! Risk of injury!

Cut injury when the rotor blades turn or the product starts accidentally.

- Disconnect the product from the mains and wait for the rotor blades to stop before you adjust or transport the product.

To connect the blower/vacuum:



WARNING! Risk of electric shock!

To avoid damage to the mains cable, it must be inserted into the cable lock.

- Before you operate insert the mains cable into the cable lock.

1. Loop the mains cable, insert the loop into the cable lock and pull tight.
2. Connect the mains cable into a 230 V mains socket.

Work positions: [Fig. L/M/N]:

The product has 3 work positions.

- Position 1: Blower mode [Fig. L]
- Position 2: Vacuum mode [Fig. M]
- Position 3: Jet vacuum mode [Fig. N]

Blower mode [Fig. O1/L]:

→ Select position 1 on the mode indicator [Fig. L].

Move at work away from solid objects such as kerb stone edge/walks, large stones, vehicles, and fences.

Clean corners by starting in corners and moving outward. This will prevent an accumulation of debris which could fly into your face.

Be careful when you work near plants. The force of the air flow could damage tender plants.

Vacuum mode [Fig. O2/M]:

→ Select position 2 on the mode indicator [Fig. M].

Move slowly back and forth over the material as you vacuum.

Avoid to move the vacuum tube into a pile of debris as this can close the vacuum tube.

For best results, keep the vacuum tube approx. 3 cm above the ground.

Jet vacuum mode [Fig. Q2/N]:

→ **Select position 3 on the mode indicator [Fig. N].**

The jet vacuum mode is intended to collect debris which is damp or stubborn. It directs a small jet of air towards the ground which will loosen stubborn material.

Position the nozzle above and slightly forward of the debris and squeeze the trigger.

Slowly move the nozzle back over the debris. This allows a jet of air to lift the debris from the ground.

To start the blower/vacuum [Fig. R]:

To start:

1. Hold the additional handle with one hand.
2. Hold the main handle with the other hand and pull the start lever.

The blower/vacuum starts.

To stop:

→ Release the start lever.

The blower/vacuum stops.

To empty the debris bag [Fig. P]:



DANGER! Risk of injury!

Sharp debris can cause injury.

→ **Do not place your hands in the bag when you empty the debris bag.**

1. Remove the debris bag (see 2. ASSEMBLY "Attaching the debris bag").
2. Hold the moulded handle at the top of the bag and the fabric handle at the bottom and empty the bag.
3. Fit the debris fin back into place before you attach the debris bag again.
4. Attach the debris bag (see 2. ASSEMBLY "Attaching the debris bag").

4. MAINTENANCE



DANGER! Risk of injury!

Cut injury when the rotor blades turn or the product starts accidentally.

→ **Disconnect the product from the mains and wait for the rotor blades to stop before you maintain the product.**

To clean the Blower/Vacuum [Fig. Q1/Q2/Q3/Q4]:



DANGER! Risk of injury!

Risk of injury and risk of damage to the product.

→ **Do not clean the product with water or with a water jet (in particular high-pressure water jet).**

→ **Do not clean with chemicals or solvents, some can destroy critical plastic parts.**



DANGER! Risk of injury!

Sharp edges can cause injury.

→ **Take care when you clean around the cutting line.**

The airflow slots must always be clean.

1. Remove the debris bag and empty it (see 3. OPERATION "To empty the debris bag").
2. Inspect the cutting line and replace it if it is worn or damaged (see 2. ASSEMBLY "To fit the cutting line").
3. Clean around the cutting line [Fig. Q1].
4. Remove debris from all air inlets with a soft brush [Fig. Q2].
5. Remove dirt and debris from the debris fin with a suitable tool [Fig. Q3].
6. Wipe over the product with a soft dry cloth [Fig. Q4].
7. Attach the debris bag (see 2. ASSEMBLY "Attaching the debris bag").

5. STORAGE

To put into storage:

The product must be stored away from children.

1. Disconnect the product from the mains.
2. Clean the blower/vacuum (see 4. MAINTENANCE).
3. Store the blower/vacuum in a dry, enclosed and frost-free place.

Disposal:

(in accordance with RL2012/19/EC)

The product must not be disposed of to normal household waste. It must be disposed of in line with local environmental regulations.

→ **IMPORTANT!** Dispose of the product through or via your municipal recycling collection centre.



6. TROUBLESHOOTING



DANGER! Risk of injury!

Cut injury when the rotor blades turn or the product starts accidentally.

→ Disconnect the product from the mains and wait for the rotor blades to stop before you trouble-shoot the product.

To replace the cutting line [Fig. Q5/Q6]:



DANGER! Risk of injury!

Sharp edges can cause injury.

→ Handle the cutting line with care.

Only use the cutting line for the GardenVac:

Reference no.: FLY024

Part no.: 513859390

1. Remove the debris bag (see 2. ASSEMBLY).
2. Remove the cutting line and discard safely [Fig. Q5].
3. If the cutting line becomes broken during use, use a suitable tool to lever the line out of the location [Fig. Q6].
4. Place the cutting line into the slot in the cutting head.
Make sure that the cutting line is correctly located.
5. Attach the debris bag (see 2. ASSEMBLY).

Problem	Possible Cause	Remedy
Blower/vacuum does not start	Mains cable is disconnected or damaged	→ Connect the mains cable or if necessary replace it.
	Debris bag is not attached correctly.	→ Attach the debris bag correctly.
	Fuse is blown.	→ Replace the fuse.
Poor blowing/vacuum	Air inlets are blocked.	→ Clean the air inlets.
	Mode indicator is not in the right position.	→ Move the mode indicator to position 1, 2 or 3 .
	Cutting line is damaged.	→ Replace the cutting line.
Blower/vacuum vibrates abnormally	Cutting line is damaged.	→ Inspect the cutting line and replace it if necessary.
	Mechanical failure.	→ Contact the Husqvarna UK Ltd. Customer Service.



NOTE: For any other malfunctions please contact the Husqvarna UK Ltd. Customer Service. Repairs must only be done by Husqvarna UK Ltd. service departments or specialist dealers approved by FLYMO.

7. TECHNICAL DATA

Electric Blower/Vacuum	Unit	Value (Art. MEV2700)
Rated Power	W	2700
Mains voltage	V	230
Mains frequency	Hz	50
Vacuum flow	l/s	102
Mulch Ration		3:1
Blow speed	m/s	54
Weight	kg	5.1
Sound pressure level $L_{pA}^{1)}$ Uncertainty k_{pA}	dB(A)	84 2
Sound power level $L_{WA}^{2)}$: measured/guaranteed Uncertainty k_{WA}	dB(A)	98/100 2

Electric Blower/Vacuum	Unit	Value (Art. MEV2700)
------------------------	------	-------------------------

Hand/arm vibration a_{vhw} ¹⁾	m/s ²	2,9
Uncertainty k_{pA}		1

Measuring process complying with: ¹⁾ EN 50636-2-100 ²⁾ RL 2000/14/EC



NOTE: The stated vibration emission value has been measured according to a standardized test procedure and can be used for comparison of one electric power tool with another. It can also be used for preliminary evaluation of exposure. The vibration emission value can vary during actual use of the electric power tool.

8. ACCESSORIES

FLYMO Replacement Cutting Line

Reference no.: FLY024
Part no.: 513859390

9. Service/Warranty

Service:

Please contact the address on the back page.

Warranty:

In the event of a warranty claim, no charge is levied to you for the services provided.

Husqvarna UK Ltd. offers a two-year warranty (effective as of the date of purchase) for this product. This warranty includes all significant defects of the product that can be proved to be material or manufacturing faults. This warranty is fulfilled by supplying a fully functional replacement product or by repairing the faulty product sent to us free of charge; we reserve the right to choose between these options. This service is subject to the following provisions:

- The product was used for its intended purpose as per the recommendations in the operating instructions.

- Neither the purchaser nor a third party has attempted to repair the product.

This manufacturer's warranty does not affect warranty entitlements against the dealer/retailer.

If problems arise with this product, please contact our Service department or send the defective product along with a brief description of the fault to Husqvarna UK Ltd., making sure to have sufficiently covered any shipping costs and to have followed the relevant postage and packaging guidelines. A warranty claim must be accompanied by a copy of the proof of purchase.

Consumables:

The cutting line, electric mains cable and the debris bag are consumables and are not included in the warranty.

Product liability


In accordance with the German Product Liability Act, we hereby expressly declare that we accept no liability for damage incurred from our products where said products

have not been properly repaired by a FLYMO-approved service partner or where original FLYMO parts or parts authorised by FLYMO were not used.

EC Declaration of Conformity

The undersigned, Husqvarna AB, 561 82 Huskvarna, Sweden, hereby certifies that, when leaving our factory, the products indicated below are in accordance with

the harmonised EU guidelines, EU standards of safety and product specific standards. This certificate becomes void if the products are modified without our approval.

Description of the product:	Electric Blower/Vacuum
Product type	MEV2700
Article-Number	9672726-01
CE-Directives	2000/14/EC 2006/42/EC 2011/65/EC 2014/30/EC
Harmonised EN	EN 60335-1 EN 50636-2-100 EN ISO 12100
Deposited Documentation	GARDENA Technical Documentation, M. Kugler, 89079 Ulm
Conformity Assessment according to	2000/14/EC Procedure: art. 14 Annex V
Noise level: measured / guaranteed	98 dB(A)/ 100 dB(A)
Ulm 30.06.2017	
Authorised representative:	 John Thompson

Deutschland / Germany
GARDENA Manufacturing GmbH
Central Service
Hans-Lorenser-Straße 40
D-89079 Ulm
Produktfragen:
(+49) 731 490-6515
Reparaturen:
(+49) 731 490-6515
service-mcculloch@gardena.com

Albania
COBALT Sh.p.k.
Rr. Siri Kodra
1000 Tirana

Argentina
Husqvarna Argentina S.A.
Av. del Libertador 5954 –
Piso 11 – Torre B
(C1428ARP) Buenos Aires
Phone: (+54) 11 5194 5000
info.gardena@ar.husqvarna.com

Armenia
Garden Land Ltd.
61 Tigran Mels
0005 Yerevan

Australia
Husqvarna Australia Pty. Ltd.
Locked Bag 5
Central Coast BC
NSW 2252
Phone: (+61) (0) 2 4352 7400
customer.service@
husqvarna.com.au

Austria / Österreich
Husqvarna Austria GmbH
Industriezeile 36
4010 Linz
Tel.: (+43) 732 77 01 01-485
service.gardena@
husqvarnagroup.com

Azerbaijan
Firm Progress
a. Aliyev Str. 26A
1052 Baku

Belgium
Husqvarna België nv/sa
Gardena Division
Rue Egide Van Opheim 111
1180 Uccle/Ukkel
Tel.: (+32) 2 720 92 12
Mail: info@gardena.be

Bosnia / Herzegovina
SILK TRADE d.o.o.
Industrijska zona Bukva bb
74260 Tesanj

Brazil
Husqvarna do Brasil Ltda
Av. Francisco Matarazzo,
1400 – 19ª andar
São Paulo – SP
CEP: 05001-903
Tel: 0800-112252
marketing.br.husqvarna@
husqvarna.com.br

Bulgaria
AGROLAND България АД
бул. 8 Декември, № 13
Офис 5
1700 Студентски град
София
Тел.: (+359) 24666910
info@agroland.eu

Canada / USA
GARDENA Canada Ltd.
100 Summerlea Road
Brampton, Ontario L6T 4X3
Phone: (+1) 905 792 93 30
info@gardena.canada.com

Chile
Maquinarias Agroforestales
Ltda. (Maga Ltda.)
Santiago, Chile
Avda. Chesterton
8355 comuna Las Condes
Phone: (+56) 2 202 4417
Dalton@maga.cl
Zipcode: 7560330

China
Husqvarna (China) Machinery
Manufacturing Co., Ltd.
No. 1355, Jia Xin Rd.,
Ma Lu Zhen, Jia Ding Dist.,
Shanghai
201801
Phone: (+86) 21 59159629
Domestic Sales
www.gardena.com.cn

Colombia
Husqvarna Colombia S.A.
Calle 18 No. 68 D-31, zona
Industrial de Montevideo
Bogotá, Cundinamarca
Tel. 571 2922700 ext. 105
jairo.salazar@husqvarna.com.co

Costa Rica
Compania Exim
Euroiberamericana S.A.
Los Colegios, Moravia,
200 metros al Sur del Colegio
Saint Francis – San José
Phone: (+506) 297 68 83
exim_euro@racsa.co.cr

Croatia
SILK ADRIA d.o.o.
Josipa Lončara 3
10090 Zagreb
Phone: (+385) 1 3794 580
silk.adria@zg.t-com.hr

Cyprus
Med Marketing
17 Digeni Akritia Ave
P.O. Box 27017
1641 Nicosia

Czech Republic
Husqvarna Česko s.r.o.
Túrkova 2319/5b
149 00 Praha 4 – Chodov
Bezplatná infolinka :
800 100 425
servis@cz.husqvarna.com

Denmark
GARDENA DANMARK
Lejrevej 19, st.
3500 Værløse
Tlf.: (+45) 70 26 47 70
husqvarna@husqvarna.dk
www.gardena.com / dk

Dominican Republic
BOSQUESA, S.R.L.
Carretera Santiago Licey
Km. 5 ½
Esquina Copal II.
Santiago
Dominican Republic
Phone: (+809) 736-0333
josebosquesa@claro.net.do

Ecuador
Husqvarna Ecuador S.A.
Arupos E1-181 y 10 de
Agosto Quito, Pichincha
Tel. (+593) 22800739
francisco.jacome@
husqvarna.com.ec

Estonia
Husqvarna Eesti OÜ
Gardena Division
Valdeku 132
Tallinn
11216, Estonia
info@gardena.ee

Finland
Oy Husqvarna Ab
Gardena Division
Lautatarhankatu 8 B / PL 3
00581 HELSINKI
info@gardena.fi

France
Husqvarna France
9/11 Allée des pierres Mayettes
92635 Gennemilliers Cedex
France
http://www.gardena.com/ fr
N° AZUR: 0 810 00 78 23
(P* d'un an appel local)

Georgia
ALD Group
Beliashvili 8
1159 Tbilisi

Great Britain
Husqvarna UK Ltd
Preston Road
Aycliffe Industrial Park
Newton Aycliffe
County Durham
DL5 6UP
Phone: (+44) (0) 344 8444558
customer.services@
husqvarna.co.uk

Greece
Π.ΠΑΠΑΔΟΠΟΥΛΟΣ ΑΕΒΕ
Λεωφ. Αθηνών 92
Αθήνα
Τ.Κ.104 42
Ελλάδα
Τηλ. (+30) 210 5193 100
info@papadopoulos.com.gr

Hungary
Husqvarna Magyarország Kft.
Ezred u. 1 - 3
1044 Budapest
Telephone: (+36) 1 251-4161
vevosszolgalt.husqvarna@
husqvarna.hu

Iceland
Ö. Johnson & Kaaber
Tunguhalsi 1
110 Reykjavík
oof@ojk.is

Ireland
Husqvarna UK Ltd
Preston Road
Aycliffe Industrial Park
Newton Aycliffe
County Durham
DL5 6UP
info.gardena@husqvarna.co.uk

Italy
Husqvarna Italia S.p.A.
Via Santa Vecchia 15
23868 VALMADRERA (LC)
Phone: (+39) 0341.203.111
assistenza.italia@
it.husqvarna.com

Japan
KAKUICHI Co. Ltd.
Sumitomo Realty &
Development Kojimachi
BLDG., 8F
5-1 Nibanencho
Chiyoda-ku
Tokyo 102-0084
Phone: (+81) 33 264 4721
m_ishihara@kaku-ichi.co.jp

Kazakhstan
LAMED Ltd.
155/1, Tazhibayevoy Str.
050060 Almaty
IP Schmidt
Abayavenue 3B
110 005 Kostanay
Korea
Kyung Jin Trading CO.,LTD.
107-4, SunDuk Bld.,
YangJae-dong,
Seochoo-gu,
Seoul, (zipcode: 137-891)
Phone: (+82) (0)2 574-6300

Kyrgyzstan
Alye Maki
av. Moladaya Guardir J 3
720014
Bishkek

Latvia
Husqvarna Latvija SIA
Gardena Division
Ulbrokas 19A
LV-1021 Riga
info@gardena.lv

Lithuania
UAB Husqvarna Lietuva
Gardena Division
Ateities pl. 77C
LT-52104 Kaunas
info@gardena.lt

Luxembourg
Magasins Jules Neuberg
39, rue Jacques Stas
Luxembourg-Gasperich 2549
Case Postale No. 12
Luxembourg 2010
Phone: (+352) 40 14 01
ap@neuberg.lu

Mexico
AFOSA
Av. Lopez Mateos Sur # 5019
Col. La Calma 45070
Zapopan, Jalisco, Mexico
Phone: (+52) 33 3818-3434
icornejo@afosa.com.mx

Moldova
Convel S.R.L.
290A Muncești Str.
2002 Chisinau

Netherlands
Husqvarna Nederland B.V.
GARDENA Division
Postbus 50131
1305 AC ALMERE
Phone: (+31) 36 521 00 10
info@gardena.nl

Neto, Antilles
Jonka Enterprises N.V.
Sta. Rosa Weg 196
P.O. Box 8200
Curaçao
Phone: (+599) 9 767 66 55
pgm@jonka.com

New Zealand
Husqvarna New Zealand Ltd.
PO Box 76-437
Manukau City 2241
Phone: (+64) (0) 9 9202410
support.nz@husqvarna.co.nz

Norway
Husqvarna Norge AS
Gardena Division
Traskerveien 36
1708 Sarpsborg
Tel: 69 10 47 00
www.gardena.no

Peru
Husqvarna Perú S.A.
Jr. Ramón Cárcamo 710
Lima 1
Tel.: (+51) 1 3320400 ext. 416
juan.remuzgo@husqvarna.com

Poland
Husqvarna
Poland Spółka z o.o.
ul. Wysockiego 15 b
03-371 Warszawa
Tel.: (+351) 22 330 96 00
gardena@husqvarna.com.pl

Portugal
Husqvarna Portugal, SA
Lagoa - Albarraque
2635 - 595 Rio de Mouro
Tel.: (+351) 21 922 85 30
Fax : (+351) 21 922 85 36
info@gardena.pt

Romania
Madex International Srl
Soseaua Odaili 117 - 123,
RO 013603 Bucuresti, S1
Phone: (+40) 21 352.76.03
madex@lines.ro

Russia / Россия
ООО „Хускарна“
141400, Московская обл.,
г. Химки,
улица Ленинградская,
владение 39, стр.6
Бизнес Центр
„Химки Бизнес Парк“,
помещение 0802.04
http://www.gardena.ru

Serbia
Domel d.o.o.
Autoput za Novi Sad bb
11273 Belgrade
Phone: (+381) 11 848 8812
miroslav.jejina@domel.rs

Singapore
Hy-Ray PRIVATE LIMITED
40 Jalan Pemimpin
#02-08 Tat Ann Building
Singapore 577185
Phone: (+65) 6253 2277
shiyang@hyray.com.sg

Slovak Republic
Husqvarna Česko s.r.o.
Túrkova 2319/5b
149 00 Praha 4 – Chodov
Bezplatná infolinka:
800 154 004
servis@sk.husqvarna.com

Slovenia
Husqvarna Austria GmbH
Industriezeile 36
4010 Linz
Tel.: (+43) 732 77 01 01-485
service.gardena@
husqvarnagroup.com

South Africa
Husqvarna
South Africa (Pty) Ltd
Postnet Suite 250
Private Bag X6,
Cascades, 3202
South Africa
Phone: (+27) 33 846 9700
info@gardena.co.za

Spain
Husqvarna España S.A.
Calle de Rivas nº 10
28052 Madrid
Phone: (+34) 91 708 05 00
atencioncliente@gardena.es

Suriname
Agrofix n.v.
Verlengde Grootestraat #22
Phone: (+597) 472426
agrofix@sur.net

Sweden
Husqvarna AB
Gardena Division
S-561 82 Huskvarna
info@gardena.se

Switzerland / Schweiz
Husqvarna Schweiz AG
Consumer Products
Industriestrasse 10
5506 Mägenwil
Phone: (+41) (0) 62 887 37 90
info@gardena.ch

Turkey
GARDENA Dost Diş Ticaret
Müessesilik A.Ş.
Sanayi Cad. Adil Sokak
No: 1/B Kartal
34873 İstanbul
Phone: (+90) 216 38 93 939
info@gardena-dost.com.tr

Ukraine / Україна
ТОВ «Хусарна Україна»
вул. Васильківська, 34,
офіс 204-р
03022, Київ
Тел. (+38) 044 498 39 02
info@gardena.ua

Uruguay
FELI SA
Entre Rios 1083 CP 11800
Montevideo – Uruguay
Tel : (+598) 22 03 18 44
info@felisa.com.uy

Venezuela
Corporación Casa y Jardín C.A.
Av. Caroni, Edif. Trezmen, PB.
Colinas de Bello Monte.
1050 Caracas.
Tlf : (+58) 212 992 33 22
info@casayjardin.net.ve

MEV2700-20.960.01/0817
5119417-10
Husqvarna AB
S-561 82 Huskvarna
Sweden

